



NEWINGTON  
LONDON

2 Bedrooms

Apartment

Located in London

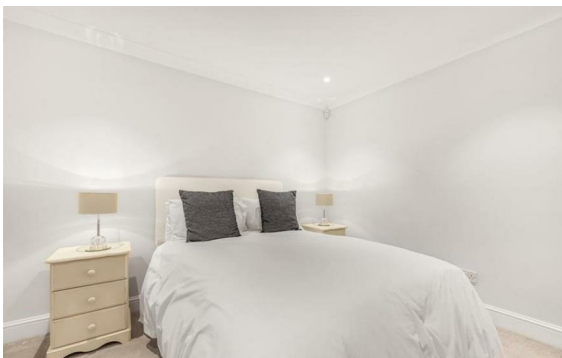
£1,105 Per Month



info@newingtonstates.com

<http://www.newingtonstates.com>

020 7724 2233



Well presented two-bedroom apartment situated in the gorgeous prestigious portered mansion in the heart of Marylebone. Comprising of two double bedrooms, two modern bathrooms, spacious reception room with lovely furniture and plenty of natural light leading into fully fitted kitchen with ample storage and excellent appliances. Further benefits include porterage, wooden flooring and high ceiling.

Montagu Mansions is located parallel to Baker Street & Gloucester Place, moments from the underground, shops and restaurants.

EPC rating: C

## Energy Efficiency Rating: C

Agents Note: Whilst every care has been taken to prepare these particulars, they are for guidance purposes only. All measurements are approximate and are for general guidance purposes only and whilst every care has been taken to ensure their accuracy, they should not be relied upon and potential buyers/tenants are advised to recheck the measurements.

# NEWINGTON LONDON

60 Upper Montagu Street

London

W1H 1SN

020 7724 2233

[info@newingtonstates.com](mailto:info@newingtonstates.com)

<http://www.newingtonstates.com>